



The NanoRem Experience: Large Scale and Case Study Testing

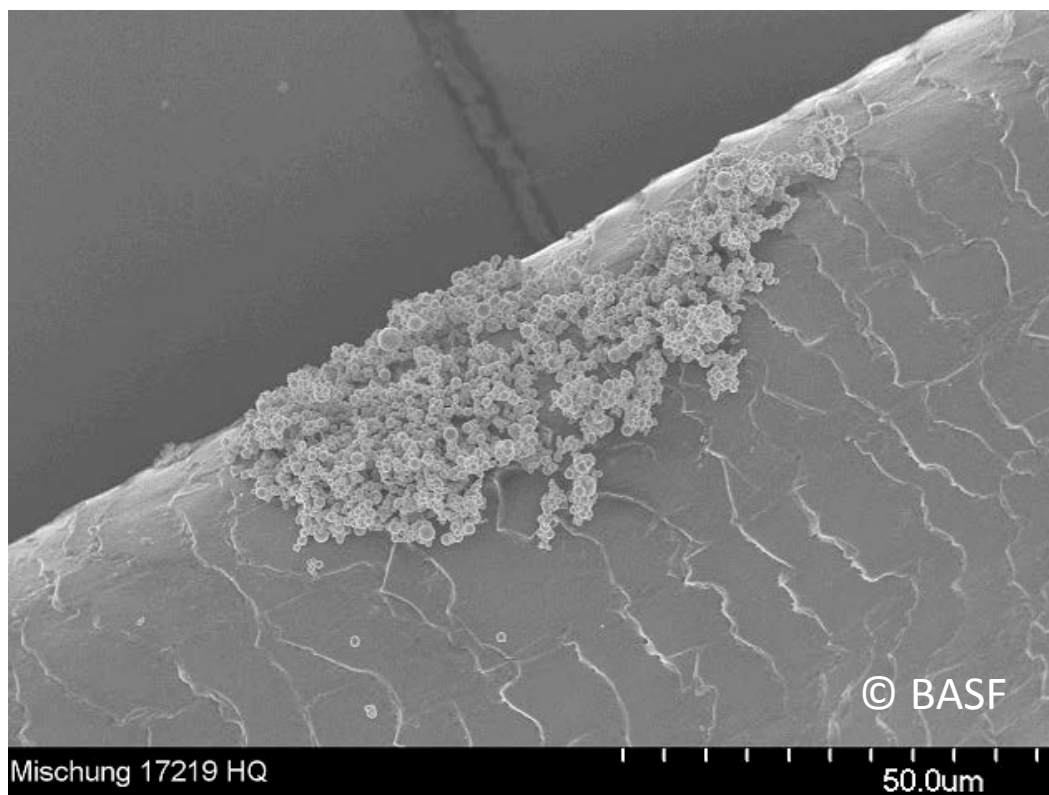
Juergen Braun, VEGAS, University of Stuttgart, Germany



Challenge

Transport (migration) of nanoparticles is a function of

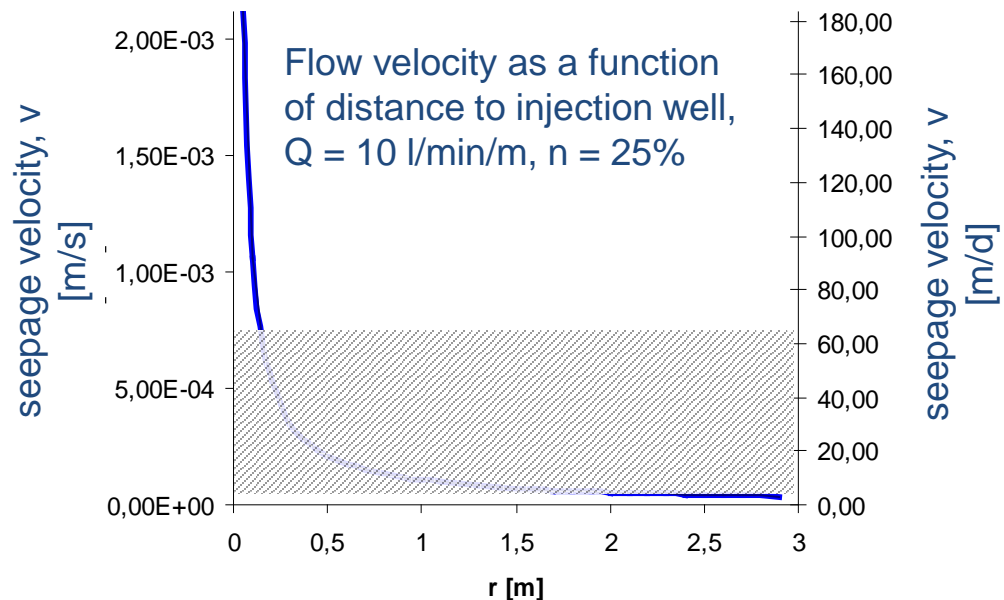
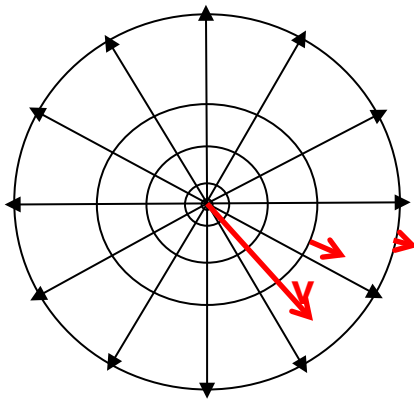
- Density of particles
- Rheology of injected suspension
- Particle concentration
- Surface charge
- Contaminant saturation
- Flow velocity
- Heterogeneity



Challenge

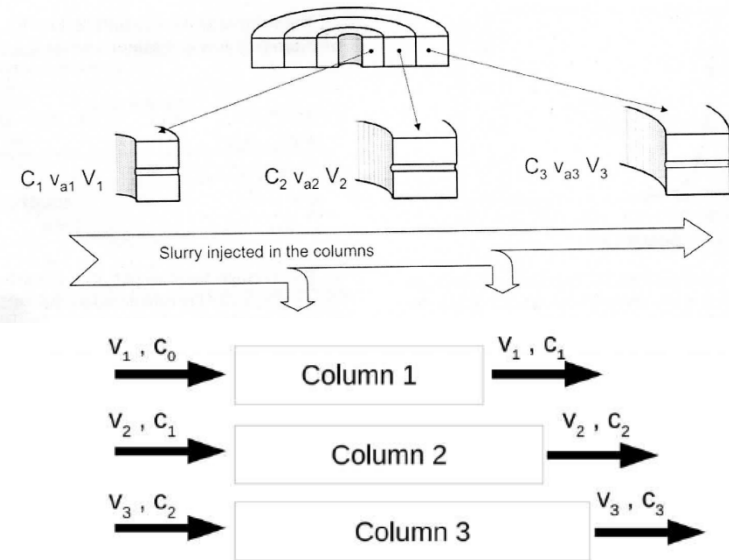
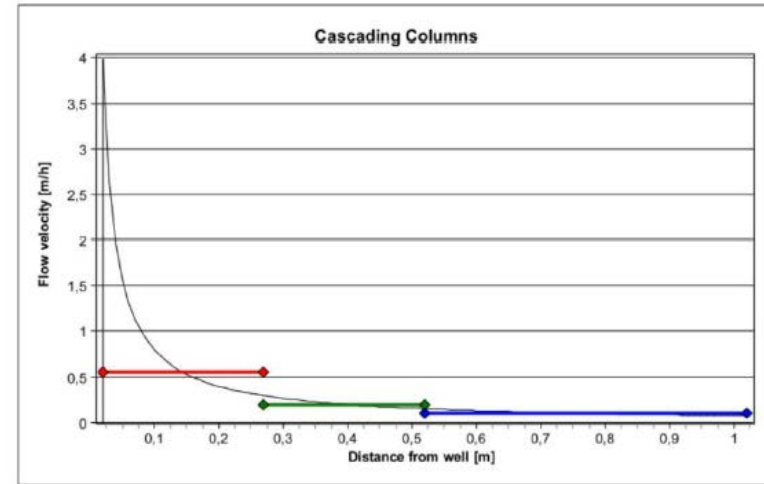
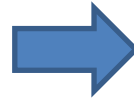
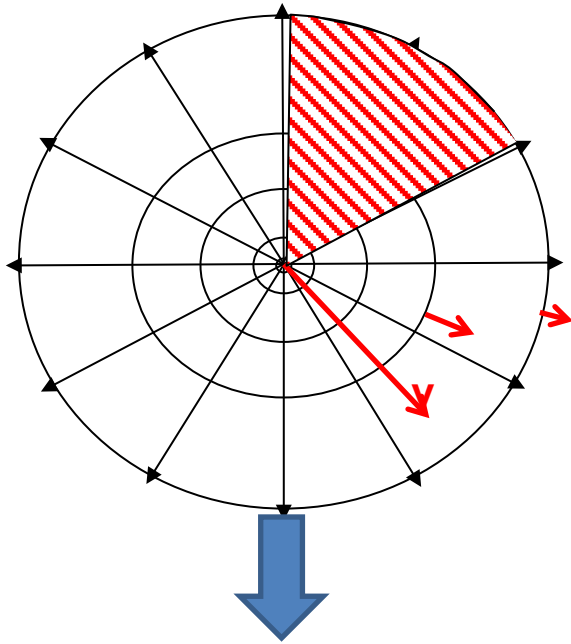
Transport (migration) of nanoparticles is a function of

- Density of particles
- Rheology of injected suspension
- Particle concentration
- Surface charge
- Contaminant saturation
- Flow velocity
- Heterogeneity

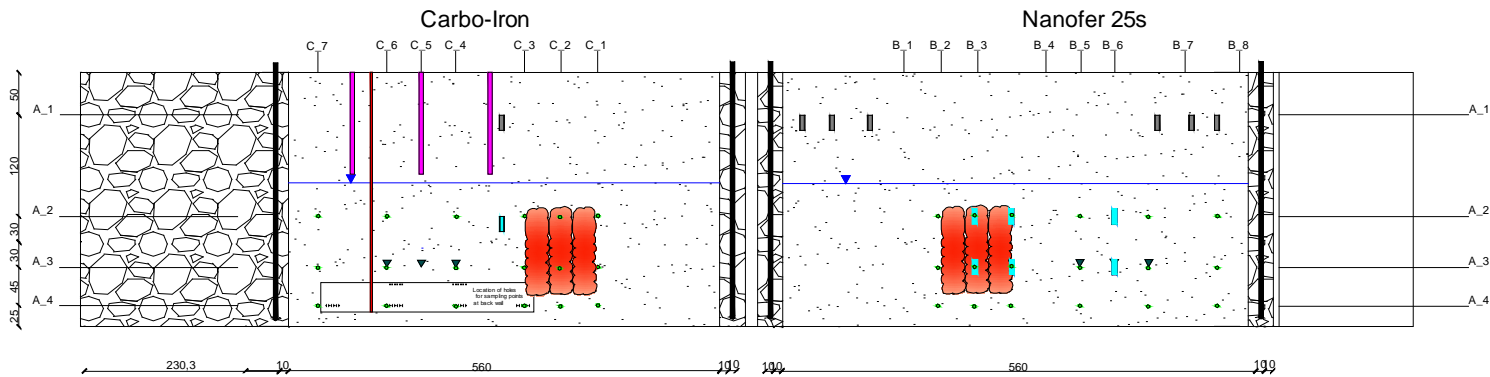


→ 2D and 3D experiments necessary

2D, homogeneous, confined



3D homogeneous unconfined Large Scale Flume



- Stainless steel walls
- Glass front
- Size (L/W/H): 6.0/1.0/3.0m
- Division into two compartments, 9m x 1m x 3m each
- 32 sampling and measurement ports in each compartment

Soil: Homogeneous medium sand ($K = 4 \cdot 10^{-4}$)

BC in: constant flux @ $q = 0.2$ m/d,

BC out: constant head @ 1.7 m

Emplacement PCE Source and Injection of NP (Nanofer 25s)

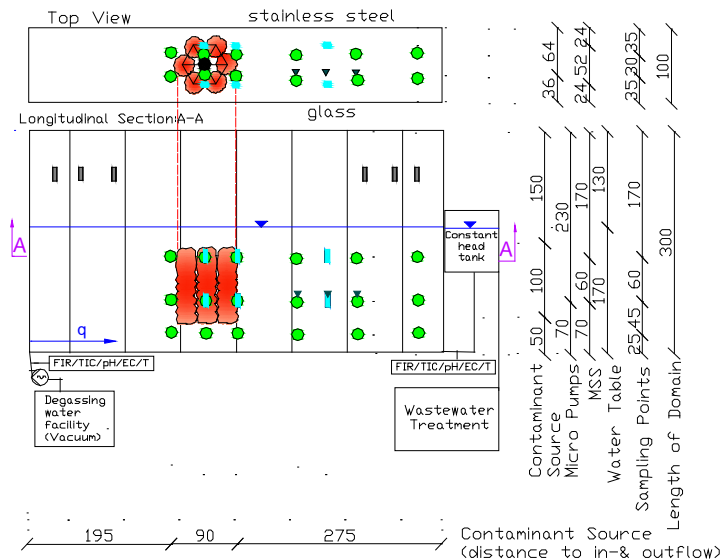
Volume Source Zone $V_S = 0.8 \text{ m}^3$
 Mass of PCE: 2kg
 (injected in 60 increments/locations),
 $\rightarrow S_{\text{PCE}} \approx 3.4\%$
 $\rightarrow S_{\text{PCE}} < S_{\text{PCE, res}} \rightarrow$ Stable source zone

NP Injection via Direct Push

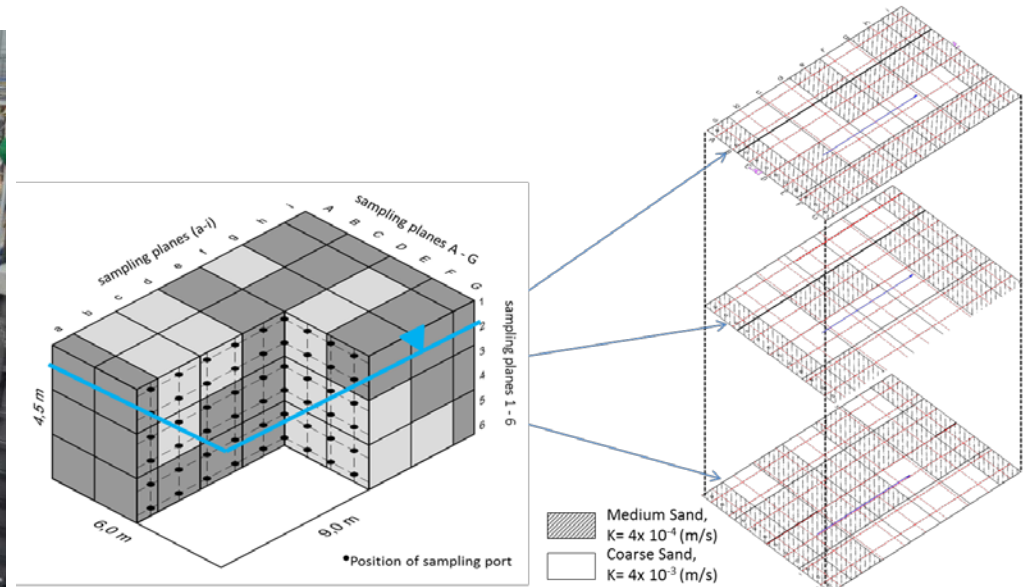
into source zone

Pressure limitation to avoid blow-out

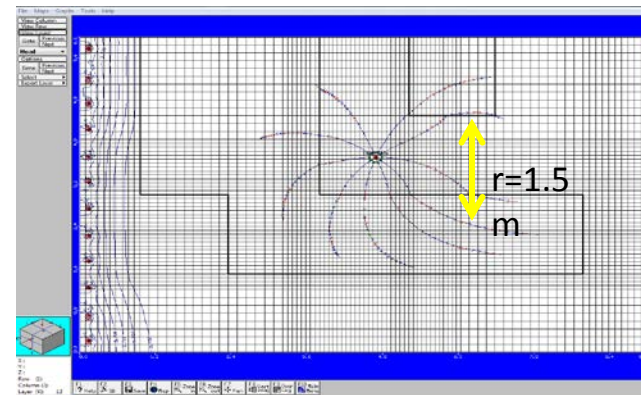
\rightarrow Limited transport distances



3D, heterogeneous, unconfined - setup

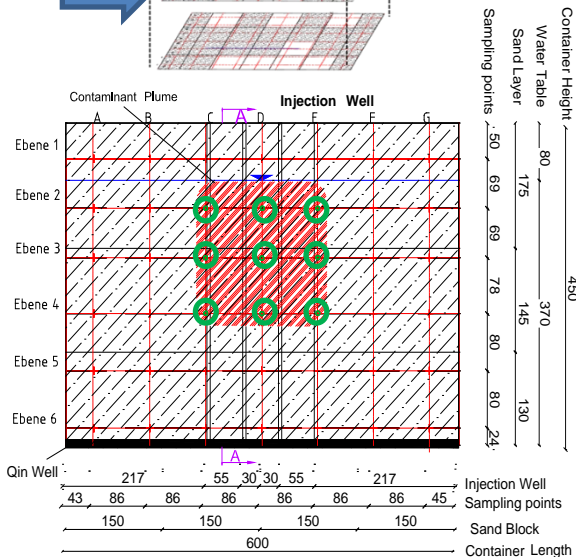
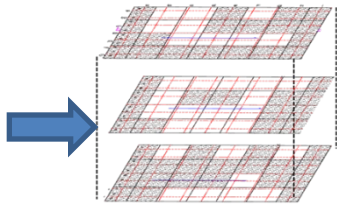
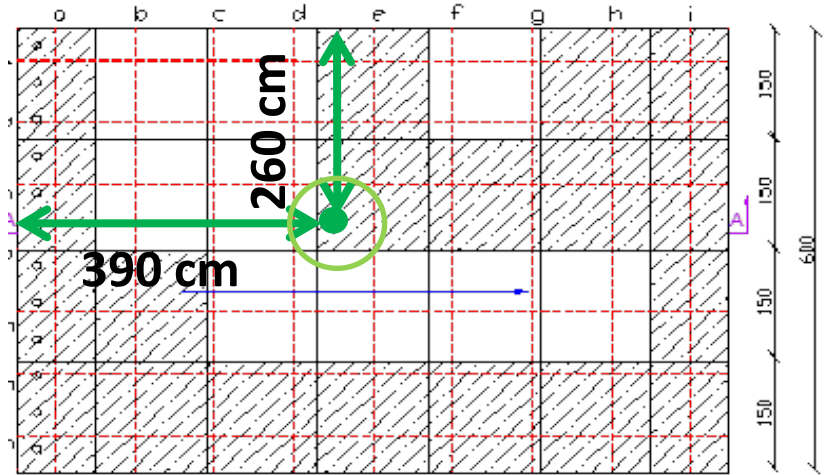


- Stainless steel walls
- Division into 3 compartments (L/W/H = 9/ 6/ 4.5 m)
- 378 sampling and measurement ports in each compartment



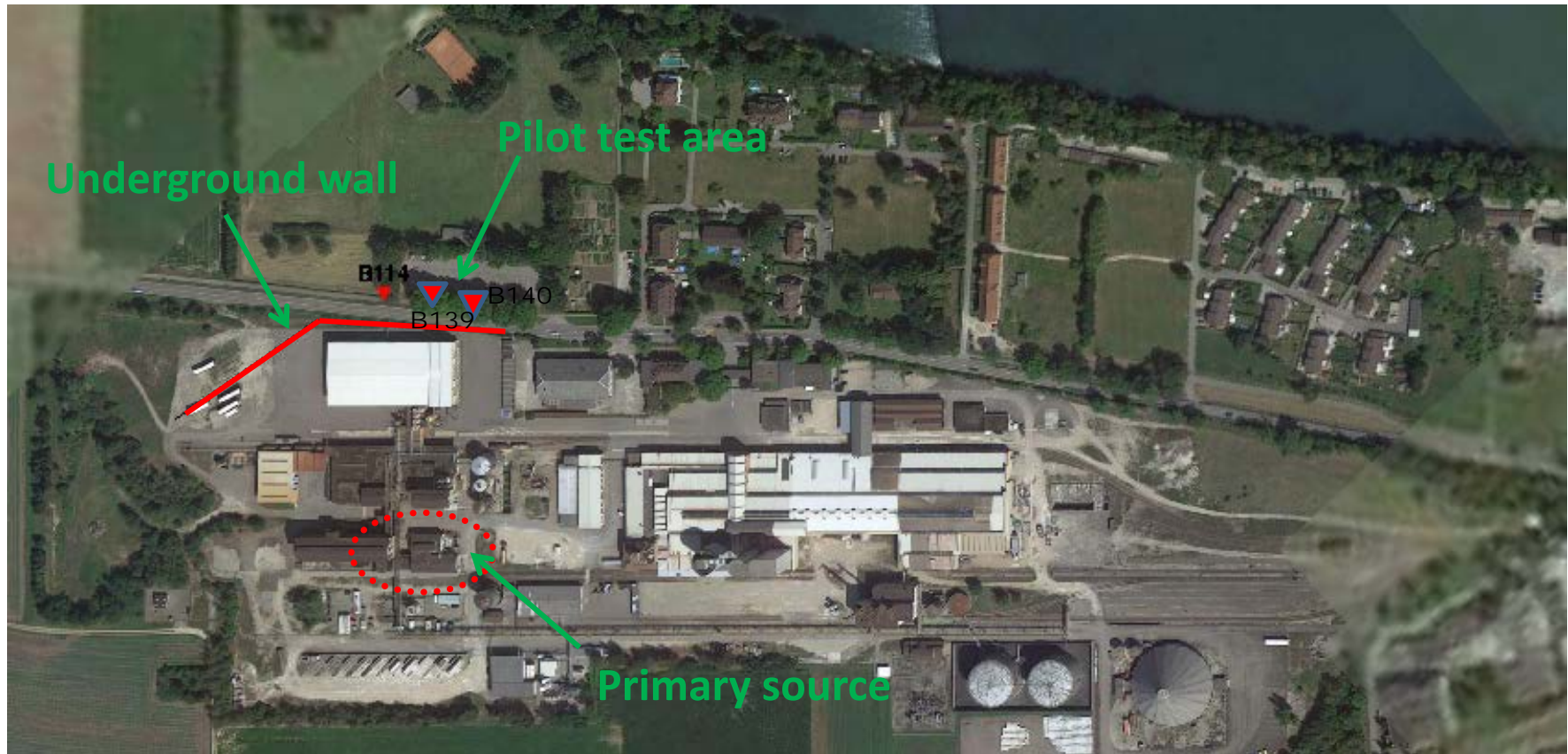
3D – Plume Emplacement and Goethite NP Injection

- Toluene plume
- Cross-section 2m x 2m = 4m²
- to be intercepted by 9 sampling ports on each vertical sampling plane



- Transport with sufficient concentration of NP was achieved
- Remediation of Toluene successful
- Exact delineation of processes participating in remediation pending

3D field - Zurzach, Switzerland



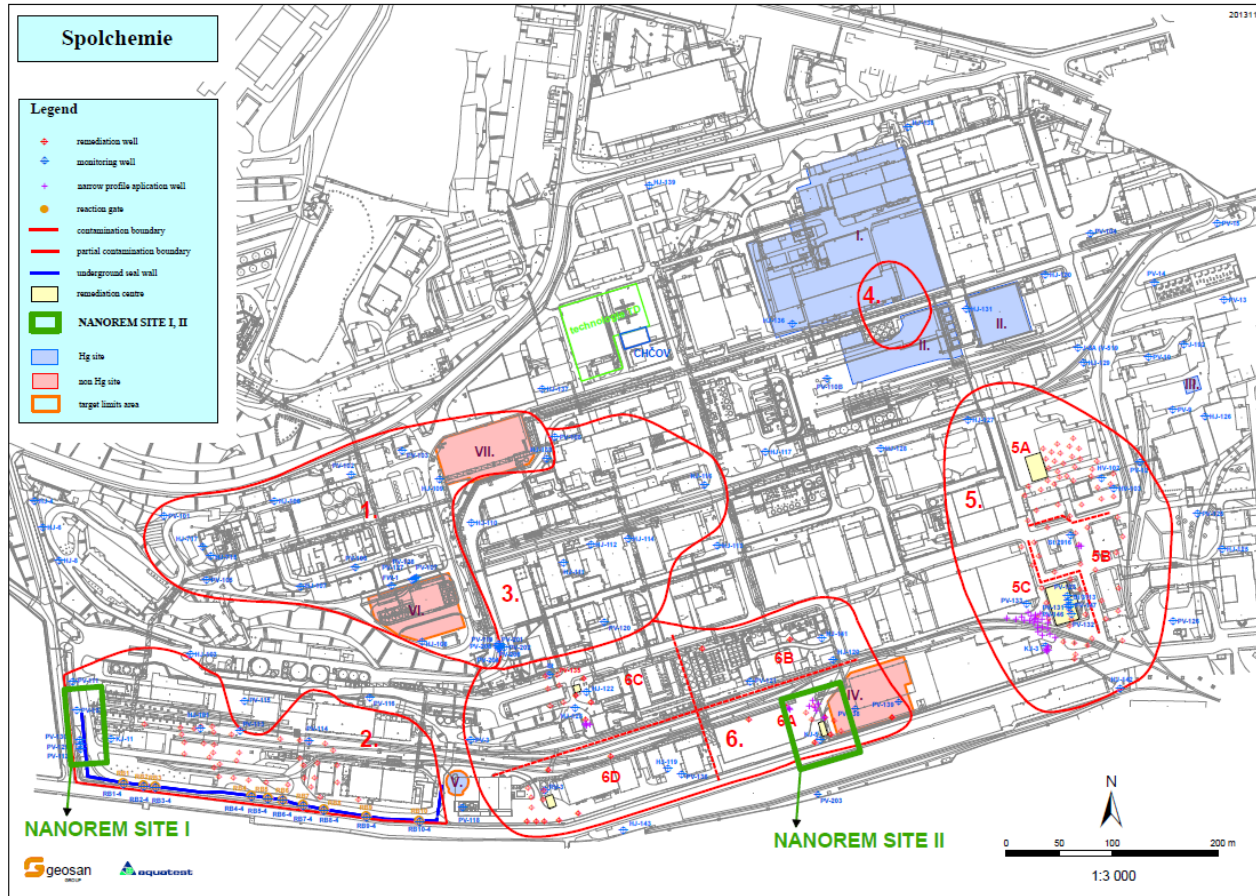
Alluvial aquifer, moderate climate, CHC contamination, high groundwater flow velocity
→ Injection of milled nZVI (UVR-FIA)

Spolchemie DNAPL, CZ



Quaternary sand gravel aquifer, continental climate, CHC contamination, small groundwater flow velocity
→ Injection of Nanofer 25s + Nanofer STAR? (NANO IRON)

Spolchemie LNAPL, CZ



Quaternary sand gravel aquifer, continental climate, BTEX contamination, small groundwater flow velocity
 → Injection of Goethite NP (UDE)

Barreiro, Portugal



Semi confined aquifer, sand, silts, warm, moderate climate, low pH, heavy metals, sulphates, nitrates, high groundwater velocities
→ inject Nanofer STAR (NANO IRON)? tbd

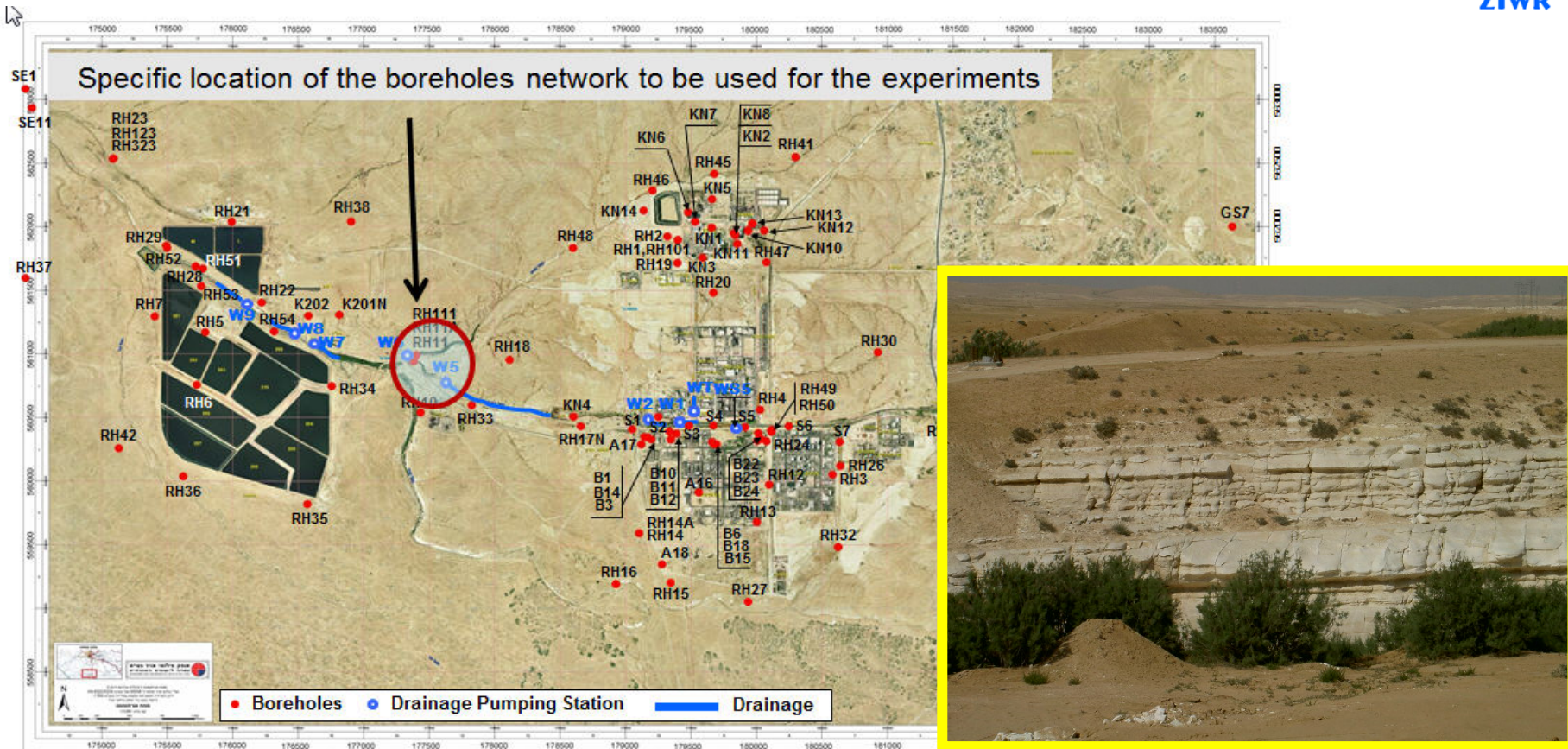
Nitrastur, Spain



Alluvial aquifer with artificial backfilling, warm, moderate climate, heavy metals, moderate groundwater velocities

→ inject Goethite (UDE) or Nanofer STAR (NANO IRON)? tbd

Besor-Secher, Israel



Fractured Aquifer, hot, arid climate, moderate groundwater velocities
→ inject Nanofer STAR and Carbo-Iron to investigate migration in fractures.

Balassagyarmat, Hungary



Alluvial aquifer, continental climate, CHC contamination, small groundwater flow velocity
→ Injection of Carbo-Iron® (UFZ, SciDre)



NanoRemediation in the field – NanoRem Test Sites
 AquaConSoil 2015 – Session 1C.28S



Thank you for your attention!



This project received funding from the European Union Seventh Framework Programme (FP7 / 2007-2013) under Grant Agreement No. 309517.

This presentation reflects only the author's views. The European Union is not liable for any use that may be made of the information contained therein.

